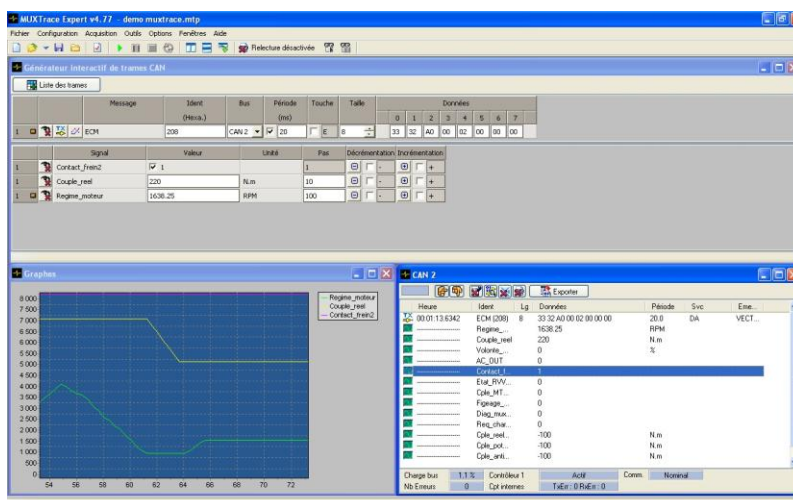
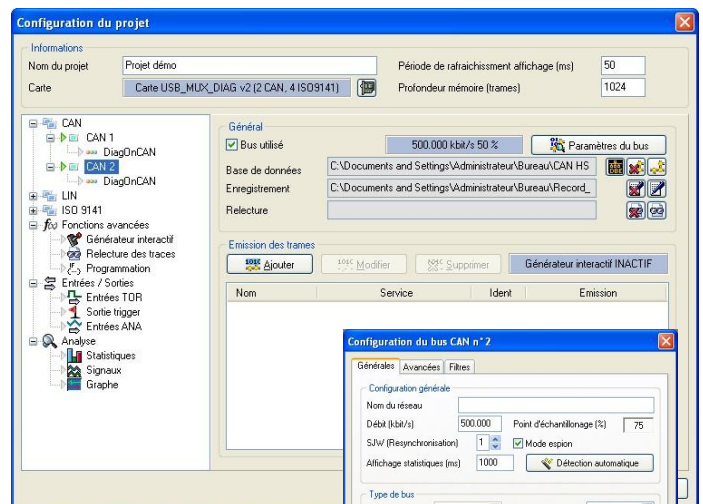


The EXXOtest® software MUXTRACE Expert is an analysis, observation, acquisition and emulation tool for CAN High Speed, Low Speed « fault tolerant », Single Wire, VAN, LIN, ISO9141, NMEA0183 and J1708-J1587 communication networks. It also manage the CAN communication layers in accordance with ISO15765-2 (Diag on CAN) and ISO14229-1 (UDS) standards.

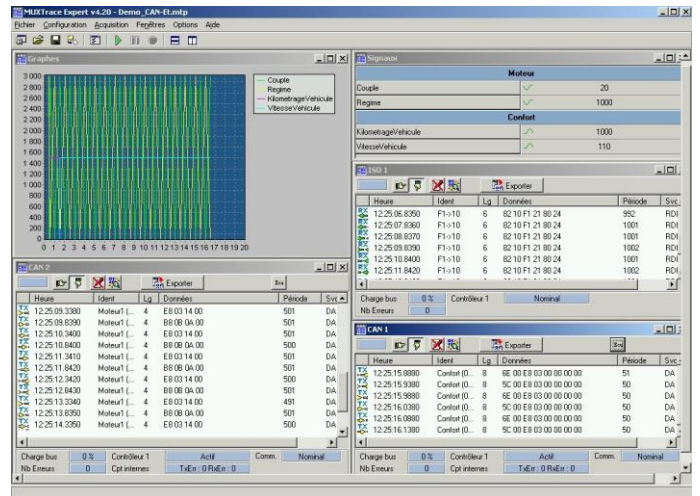
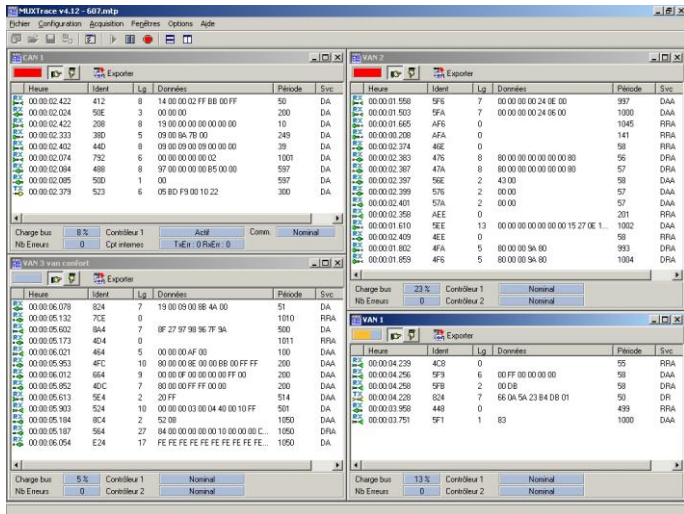
Main features:

- Analyze up to 5 kinds of networks simultaneously
- Detailed visualization of frames and associated signal values by databases association (dbc, ldf, dbv, ... file format)
- Graphical display of signals from different networks in a single window
- General information display (bus load rate, controller status, internal counters, degraded modes, ...) for each network in a dedicated window
- Periodic and event frames emission
- Interactive frames generator allowing to modify the ID value, the message period, the data and data length of a frame during the acquisition / emission, ...
- ISO 15765-2. Simulation of a tester tool request and/or ECU answers
- Spying of segmented messages (requests / answers)
- Data records in asc or txt file formats (VECTOR compatible)
- Digital inputs synchronisation with communication networks events
- Digital output synchronization with a CAN message (e.g. oscilloscope synchronization)
- Programming function allowing the user to create its own program into MUXTRACE environment (as a dll file format)

The particularly easy and intuitive project design makes of MUXTRACE EXPERT a comfortable tool for analysis, observation, acquisition or simulation of data exchanges.



PC software and
embedded software
updates
free and unlimited at
www.exxotest.com



LICENSES:

In order not to impose any association of license with a single PC, the license is associated with the communication interface, and therefore any PC which is connected to the "Expert" interface will allow full MUXTRACE Expert functionalities.

When no communication interface (or when a communication interface which does not have any MUXTRACE Expert license associated) is connected to the PC, a demonstration mode allows the replay of a trace file to evaluate most of the functionality of the application.

Additional tools and accessories

*Included in the MUXTRACE Expert license

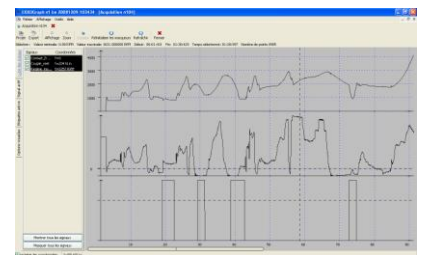
MUXUtilities* : post-treatment tools pack including,

Exxograph : graphics tool for asc file format traces (by association of dbc file format databases).

ASCProcess : asc file format treatment tool (advanced filtering functions, file cutting, fusion, asc to csv file format, ...) : see MUXUtilities datasheet

MUXSERVER: free software server allowing multiple applications to simultaneously access a single EXXOtest® card or USB interface.

DLL-MUX-xxx libraries: software library enabling simple and fast interfacing with a PC application using Windows 95, to Vista(32) operating systems with CAN HS/LS/SW, VAN, LIN, ISO9141, Diag On CAN networks.



Documents and downloads : www.exxotest.com